



# **IL 53 Phase I Study**

## **River Road to Patterson Road**

### **Will County, Illinois**



**Illinois Department  
of Transportation**

**CAG Meeting #3**  
**October 11, 2023**

# Meeting Agenda

1. Welcome / Introductions
2. CAG #2 Recap
3. Project Overview
4. Project Update
5. Next Steps
6. Proposed Improvements Overview

# Project Team Introduction

- **Steve Schilke**
  - Project and Environmental Studies Section Chief - IDOT
- **Corey Smith**
  - Project Manager - IDOT
- **Kyle Bochte**
  - Project Engineer - IDOT
- **Antonio Acevedo**
  - Consultant – Clark Dietz
- **Ana Niño Flores**
  - Consultant – Clark Dietz
- **Richard Ray**
  - Consultant – Huff & Huff/GZA



# Project Implementation Process

PHASE I



PRELIMINARY  
ENGINEERING  
& ENVIRONMENTAL  
STUDIES

PHASE II



CONTRACT PLAN  
PREPARATION



LAND ACQUISITION

PHASE III



CONSTRUCTION

# Phase I Project Schedule



-  Public Meeting
-  CAG Meeting
-  Public Hearing



# CAG Meeting #2 Review

# Workshop Results

## CAG #2 Potential Improvements Workshop Results

### Station 1 – W. Arsenal Rd to Hoff Rd.

#### Medians

- Ensure enough space is provided for left turn refuge
- Allow U-turn at Midewin entrance
- Decrease median openings along Midewin

#### Shared-Use Path

- Extend shared-use path south to Hoff Road

#### General

- Address SB bottleneck between W. Arsenal Rd and River Rd
- Address flooding along IL 53 b/w W. Arsenal Rd and Midewin

### Station 2 – Hoff Rd. to Millsdale Rd.

#### Medians

- Concerned with trucks making U-turns

#### General

- Suggest keeping signal at Ira Morgan St
- Consider roundabout at Mississippi Ave

### Station 3 – Millsdale Rd. to Doris Ave (US 52)

#### Medians

- Agreed with raised medians for traffic calming and ped refuge

#### Shared-Use Path

- General agreement with location and layout
- Consider sidewalks along Mills Rd to Gardner St

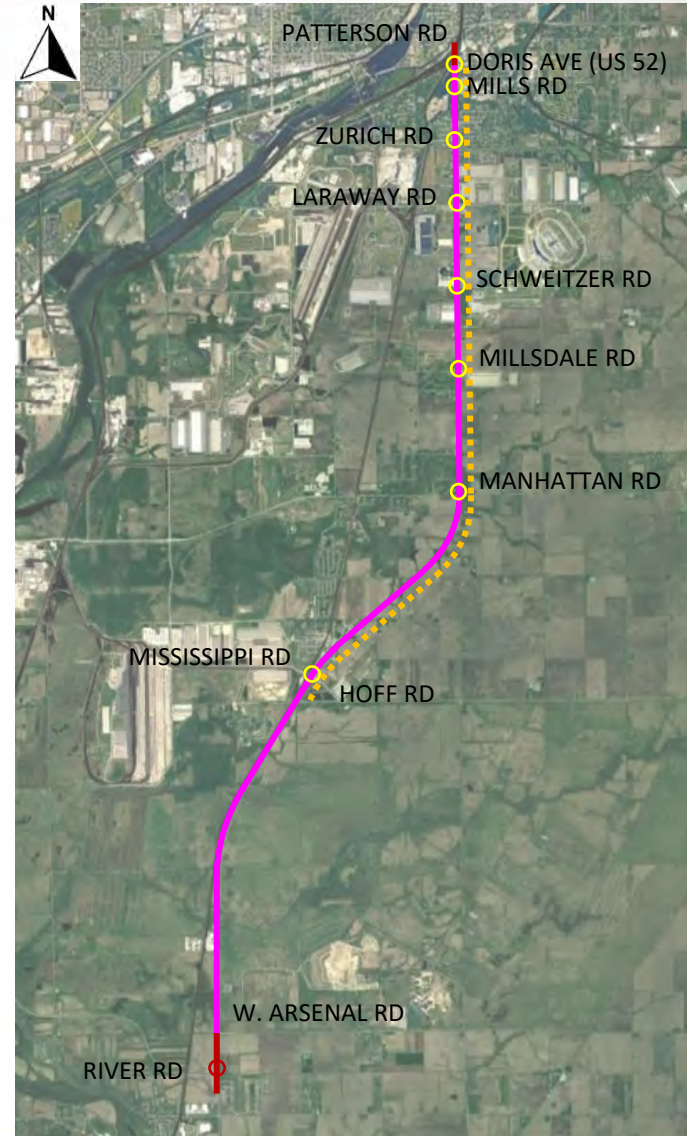
#### General

- Coordinate Laraway improvements with gas stations
- Analyze need for EB right turn lane Zurich Rd
- City of Joliet prefers Nowell Ave remain open
- Consider restriping IL 53 to three lane section b/w Doris Ave and Patterson Rd
- Analyze school bus turnout on SB IL 53 south of Old Elm Rd



# Project Overview

- **Project Scope**
  - Improve safety and operations along IL 53
  - 13 miles of corridor safety improvements
  - 8 intersection improvements
  - 8 miles of shared-use path
- **North Project:**
  - Extended north to Patterson Road to include reconstruction of IL 53
  - Split project into two separate projects:
    - Project 1 – Patterson Rd to Mills Rd
    - Project 2 – Mills Rd to Arsenal Rd
- **Project Addition:**
  - Extended south to include IL 53 at River Road intersection
  - Add through lanes on IL 53 and remove bottleneck





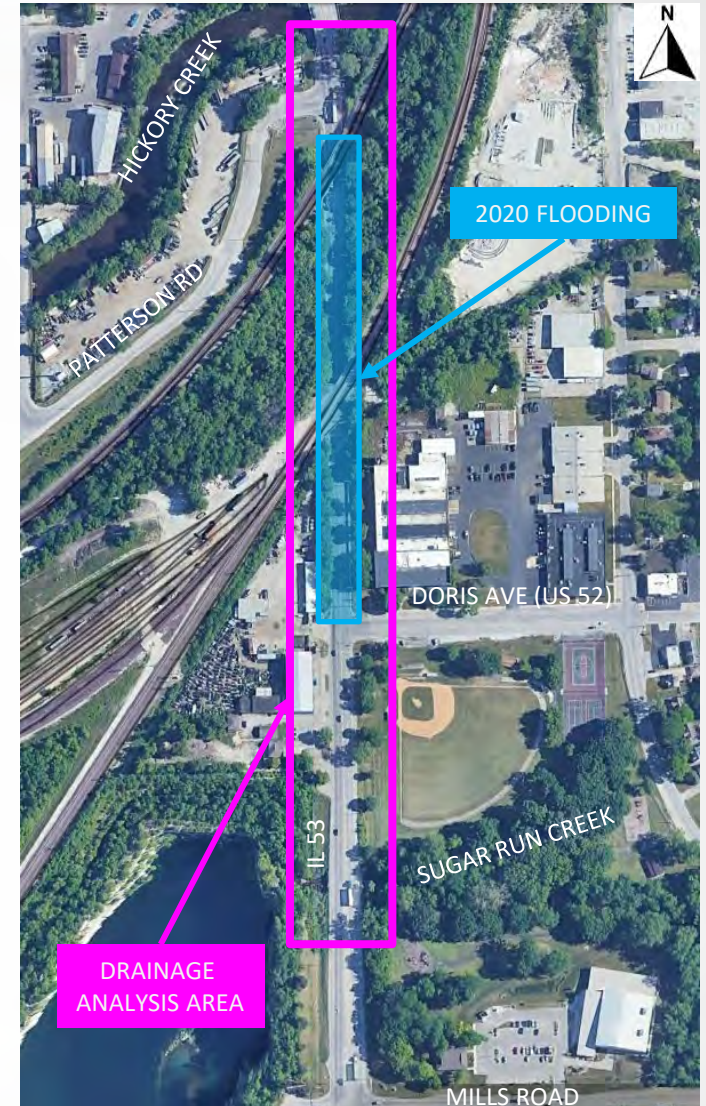


# Project Update

# Project 1 Update

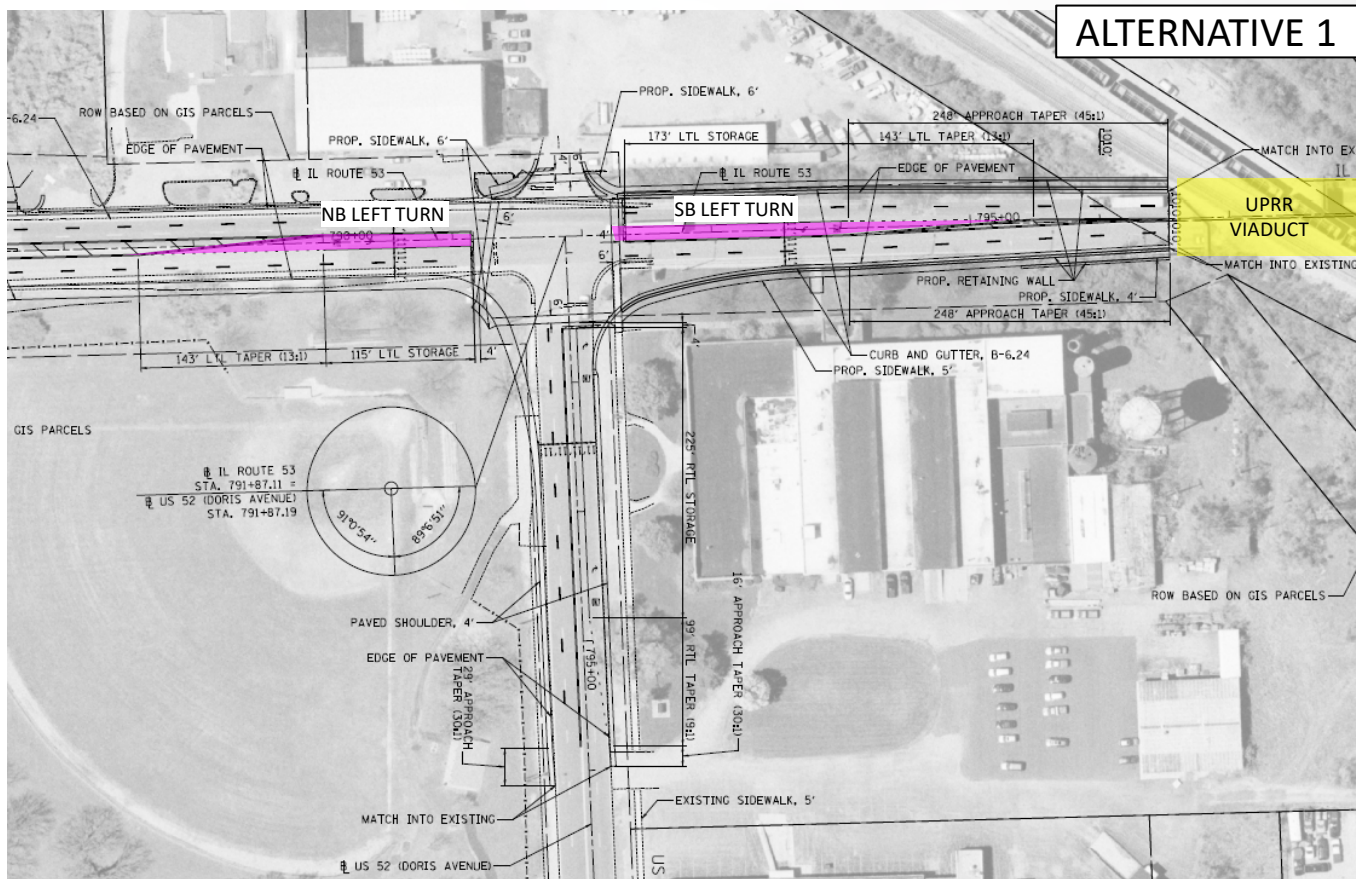
## Patterson Rd to Mills Rd

- Drainage Analysis
  - Address flooding along IL 53 between Doris and Patterson
  - Survey and televise existing storm sewers
  - Analyze range of alternatives to prevent flooding



# Project 1 Update

- IL 53 at Doris Ave Improvements

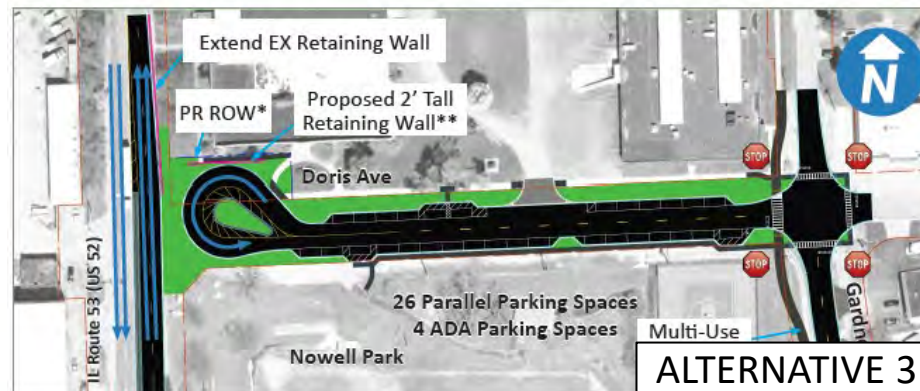
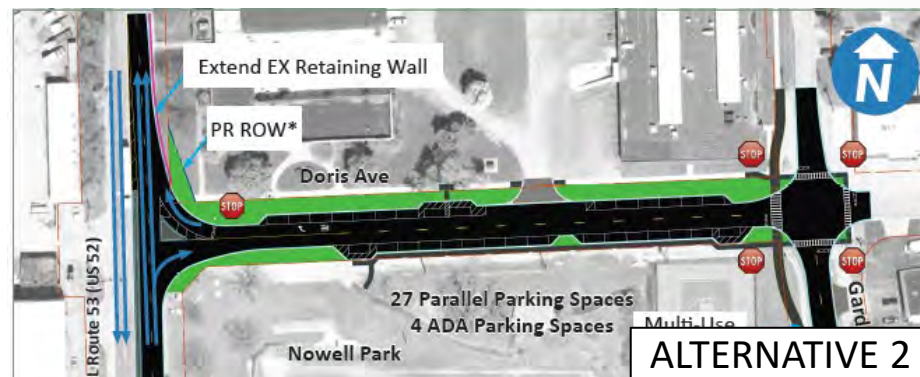




# Project 1 Update

## IL 53 at Doris Ave Improvements

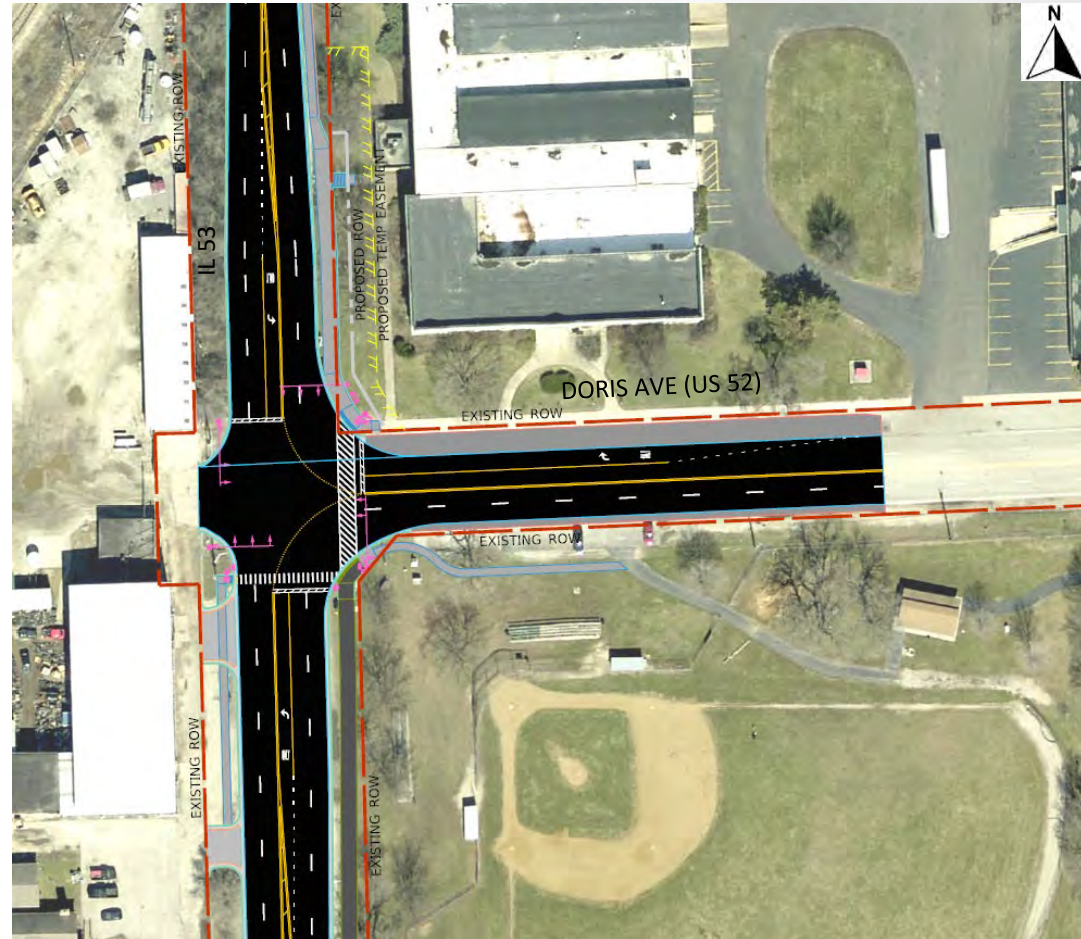
- Analyzed Cul-de-Sac and Right-In/Right-Out alternatives at IL 53/Doris intersection
- Both required the reroute of US 52 from Doris Ave to Mills Rd
- Explored jurisdictional transfer of Mills Road from Will County to IDOT



# Project 1 Update

- IL 53 at Doris Ave Improvements

- US 52 reroute presented many challenges
- Cul-de-Sac and Right-In/Right-Out alternatives eliminated
- NB/SB left turns moving forward





# Project 1 Update

- **Mills Rd at US 52 Improvements**

- Crash analysis identified safety concerns due to skewed intersection and poor sight lines on Mills Rd and Nowell Ave
- Does not accommodate truck turning movements
- Analyzed All-Way Stop Control and Roundabout alternatives at the Mills/Gardner intersection





# Project 1 Update

- **Mills Rd at US 52 Improvements**

- Crash analysis identified safety concerns due to skewed intersection and poor sight lines on Mills Rd and Nowell Ave
- Does not accommodate truck turning movements
- Analyzed All-Way Stop Control and Roundabout alternatives at the Mills/Gardner intersection
- Moving forward with All-Way Stop Control and closure of Nowell Avenue

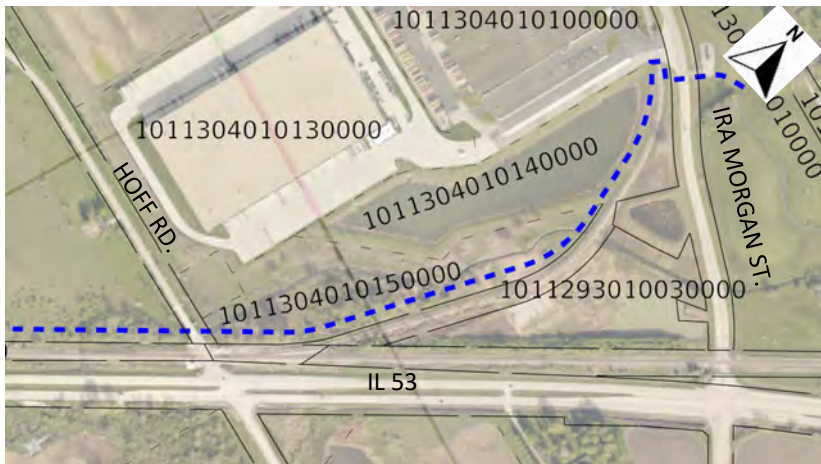


# Project 2 Update

## Mills Rd to Arsenal Rd

### Improved Pedestrian Connectivity:

- Elwood requested improved pedestrian connectivity to proposed shared-use path
- IL 53 at Mississippi does not warrant a traffic signal
- IDOT avoids uncontrolled pedestrian crossings on high-speed state routes
- Addition of sidewalk along west side of IL 53 from Hoff Road to Mississippi Avenue

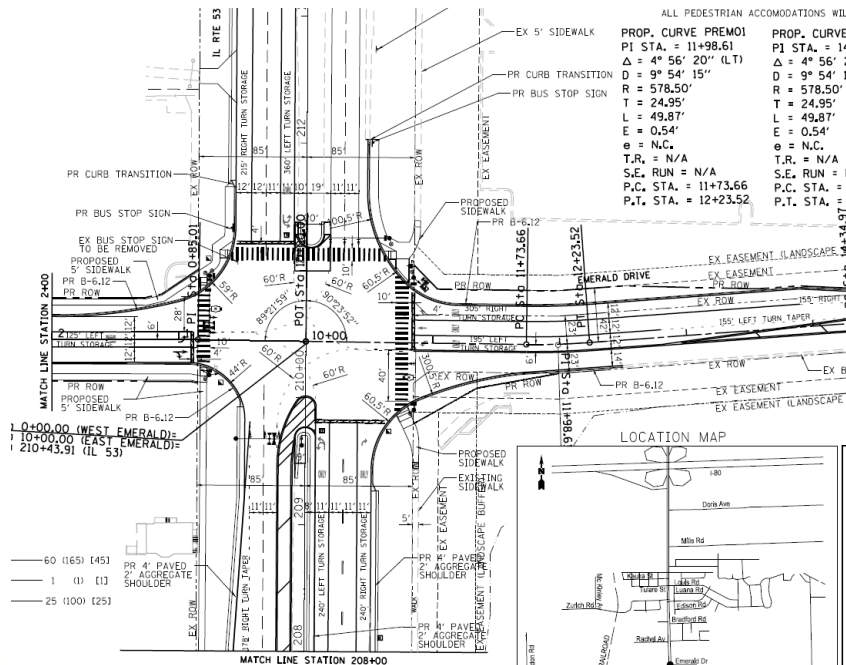




# Project 2 Update

## Mills Rd to Arsenal Rd

- Additional Coordination:
  - Permitting for local developments along IL 53
  - Realignment of S. St Louis Street
  - Emerald Drive Improvements





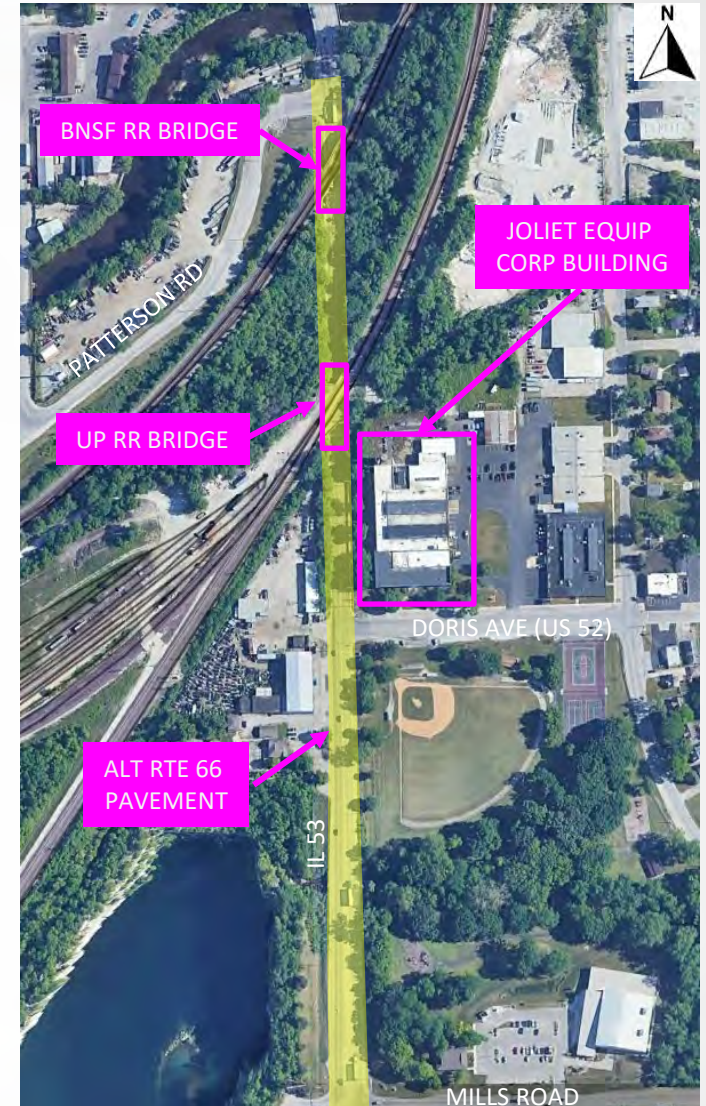
# Environmental Review



# Environmental Review

## Section 106 Coordination

- Pursuant to Section 106 of the National Historic Preservation Act of 1966
- Historic survey conducted Oct 2020-Jan 2021
- 13 historic sites with no effect (Project 2)
- No adverse effect for US Route 66 (Project 1 & 2)
- No adverse effect for 3 sites (Project 1)
- Finding of No Adverse Effect - Nov 2021
- Separate Assessment of Effects Report underway for Project 1





# Environmental Review

## Section 4(f)

- Pursuant to USDOT Act of 1966 – established requirement for consideration of park and recreational lands, wildlife and waterfowl refuges, and historic sites in transportation development
- Land is permanently incorporated into a transportation facility; Temporary occupancy of land that is adverse; Constructive use impacts impair protected activities, features or attributes of property
- Analyzing potential impacts to Nowell Park as de minimis due to grading and proposed sidewalk connection.
- Section 4(f) report to be completed and available for public comment in early 2024.

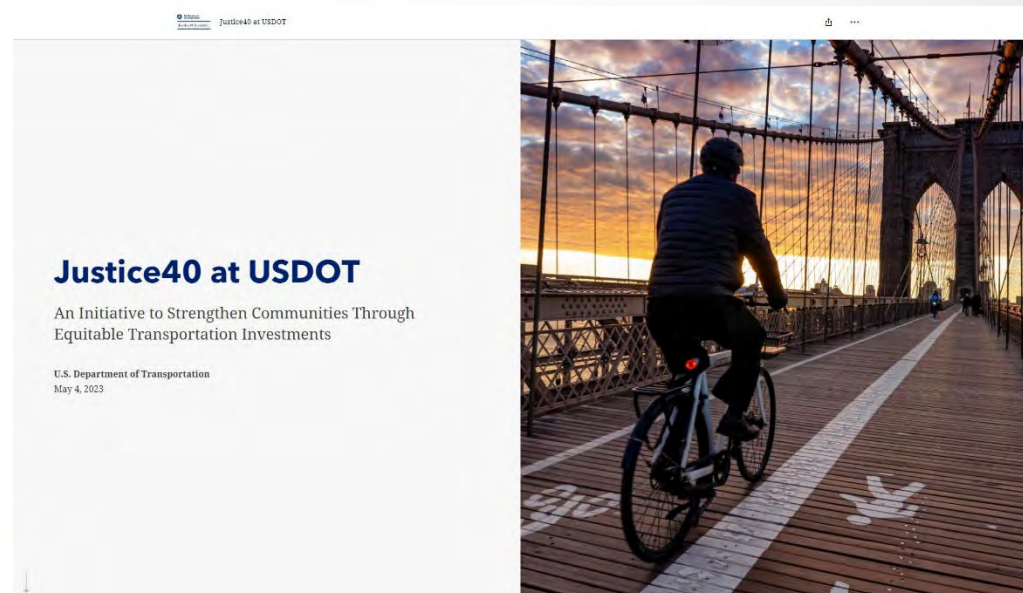




# Environmental Review

## Environmental Justice (EJ)

- Fair treatment and meaningful involvement of all people, regardless of race, ethnicity, income, national origin, or education level with respect to the development, implementation and enforcement of environmental laws, regulations and policies.
- EJ analysis is underway



# Environmental Questions

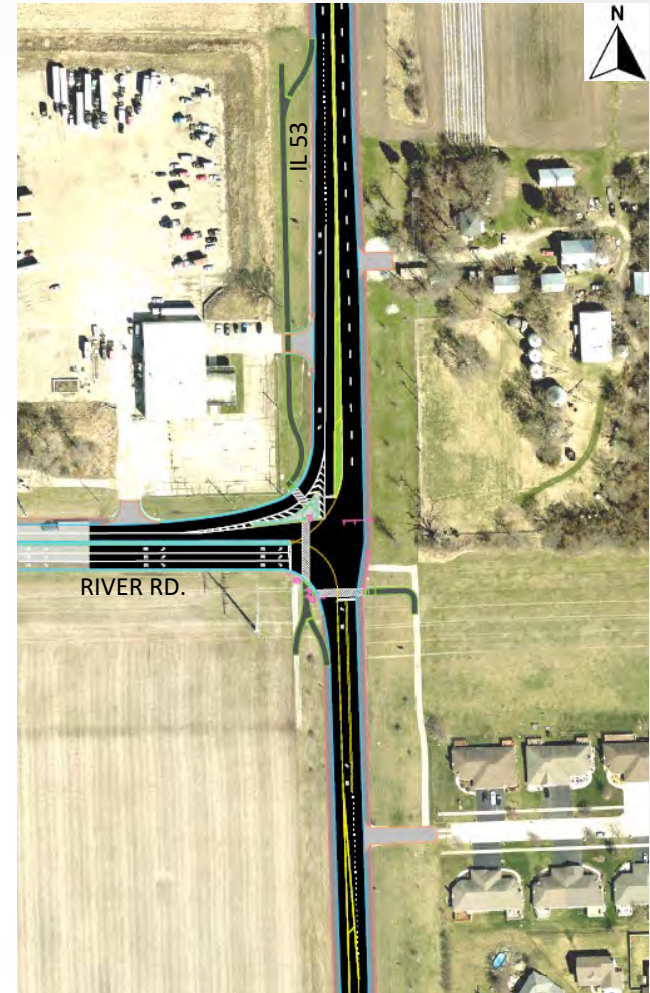
## Environmental Topics

- Section 106
- Section 4(f)
- Environmental Justice
  - Does anyone have any concerns with EJ issues at it relates to this project?
  - Has there been historical discrimination along the IL 53 corridor?
- Contact IL 53 project team at:
  - <http://il53corridor.org/>
  - [IL53Corridor@ClarkDietz.com](mailto:IL53Corridor@ClarkDietz.com)

# South Project Update

- IL 53 at River Road Improvements

- Added as a separate project
- Incorporate plans from City of Wilmington to add eastbound dual left turn lanes on River Rd and free flow southbound right turn lane on IL 53
- Widen IL 53 to 4 lanes between River Rd and W. Arsenal Rd
- Added bicycle accommodations via off road shared use path and widened shoulders



# Project Update

- Hoff to Arsenal
  - Existing pavement in need of repair
  - IDOT has funding for emergency patching
  - IDOT exploring long term solutions that would include reconstruction







# Next Steps



# Next Steps

- Public Hearing anticipated late 2023
- Final Phase I approval anticipated late 2023/early 2024 for Project 2
- Final Phase I approval anticipated in 2024 for Project 1
- South project approval pending subsequent funding





# Proposed Improvements Overview