



IL 53 Phase I Study
W. Arsenal Road to US 52
Will County, Illinois



**Illinois Department
of Transportation**

CAG Meeting #2
Stone City VFW
May 3, 2017



Meeting Agenda

1. Welcome / Introductions
2. Project Update
3. CAG #1 Review
4. Potential Improvements Workshop
5. Workshop Review & Discussion
6. Next Steps

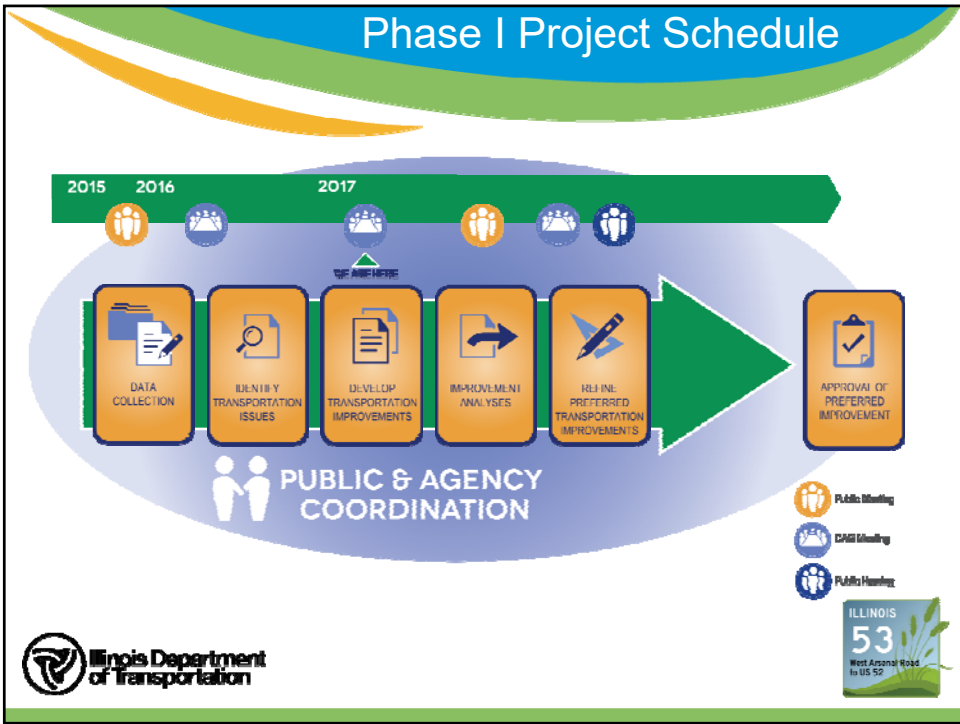
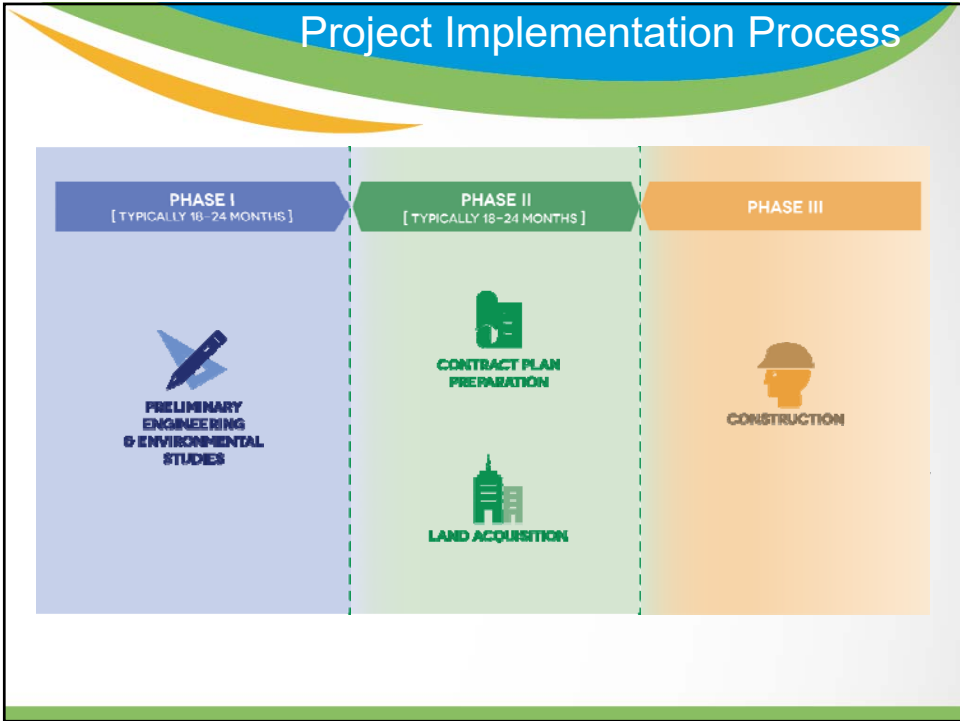


Project Team Introduction

- Kimberly Murphy
 - Consultant Studies Unit Head
- Brenda Alicea
 - Project Manager - IDOT
- Chris Kersten
 - Project Manager/Patrick Engineering
- Scott Czaplicki
 - IDOT
- Stacie Dovalovsky
 - Consultant – Clark Dietz




Project Update



Project Update

Since CAG #1...

- **Coordination with Regional Plans:**
 - Will County adopted their 2040 Long Range Transportation Plan, *Will County Connects 2040*
 - Will County Land Use Department developed the *Sugar Run Creek Area Neighborhood Plan*
 - Houbolt Road Bridge over the Des Plaines River
 - ICC resolution for closure of UP Railroad Crossing at Walter Strawn Dr.
 - I-55 Phase I Study from I-80 to US 52
- **Coordination with Local Plans:**
 - Permitting for local development along IL 53
 - Coordination with Will County, City of Joliet, Forest Preserve, Park District
- **New Project Coordination:**
 - Topographic survey
 - Traffic counts
 - Environmental coordination is still on going
 - Other improvements within our project area
 - W. Arsenal Rd.
 - Hoff Rd.
 - W. Walter Strawn Dr./W. Ira Morgan Rd.
 - S. St. Louis St.
 - Emerald Dr.





CAG Meeting #1 Review

Issues Workshop Results

CAG #1 Identified Issues

- Safe on and off of IL 53
- Speed of trucks
- Pedestrian
- Street lighting between Doris Ave. and Laraway Rd.
- Signage and control for all access/egress at intersections
- Mills Rd. to Laraway Rd. – side street access and alignment
- Vehicles turning out of Dollar Ave
- Secondary access to Elmhurst Intermodal south of West Ave Rd.
- Safety of residents, school, 1st responder access
- IL 53 & Laraway Rd. intersection improvement
- Westbound traffic on Laraway Rd. to the Intermodal facilities
- Railroad delays at Laraway Rd. and IL 53
- Compression of traffic – rapid dispersion onto interstates
- Increase cross traffic safety signals/signs for vehicular and pedestrian
- Damage to agricultural land
- Preventing access to natural heritage (Mills & Abraham Lincoln National Cemetery)
- Abraham Lincoln National Cemetery issues – decrease speed limit & add signs
- Viaducts and I-80 interchange
- Speed enforcement
- Engine breaking










<http://www.idot.illinois.gov/projects/i80-rdgr-rd-to-us30>

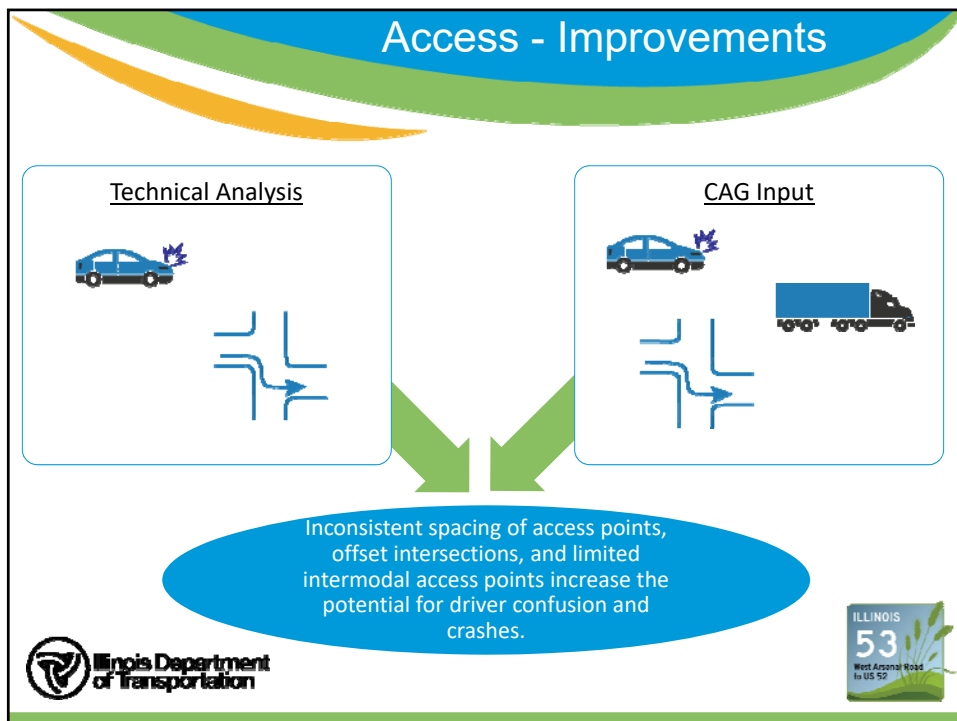
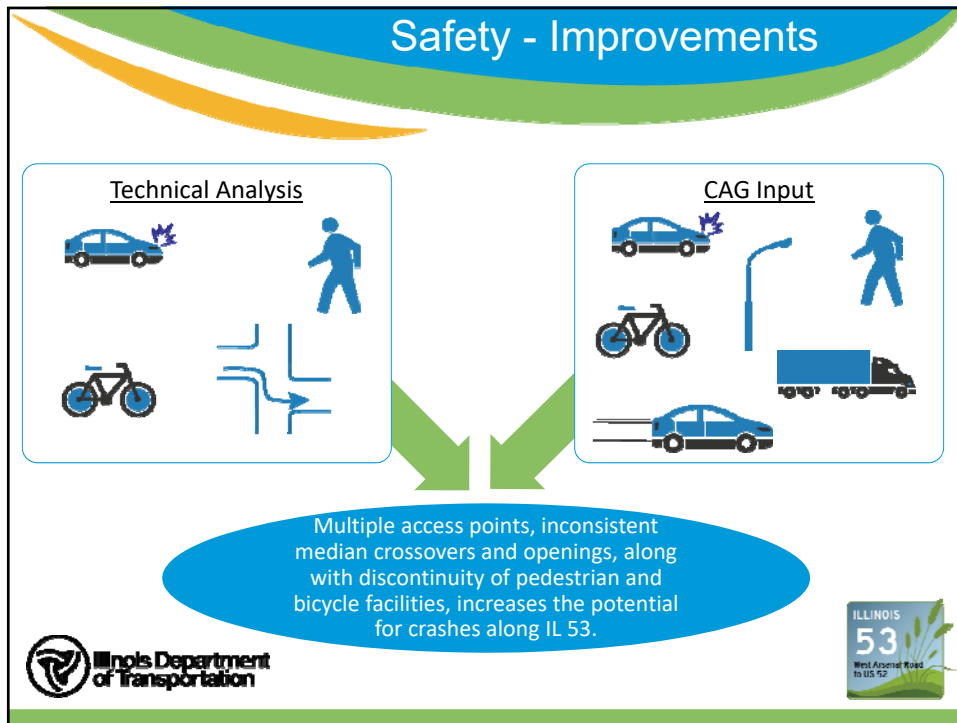



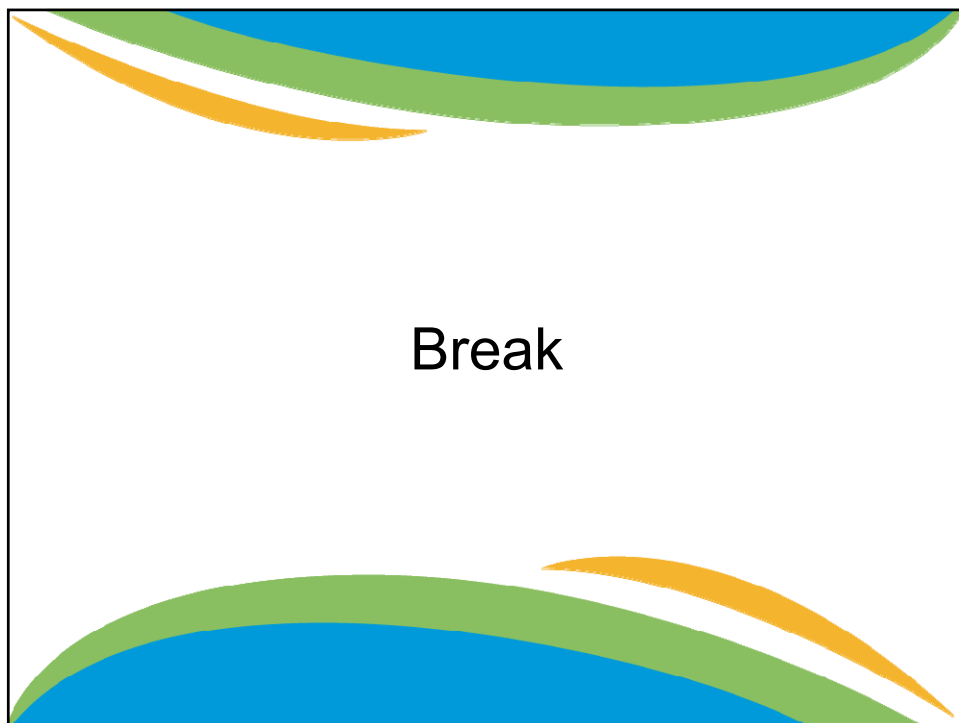
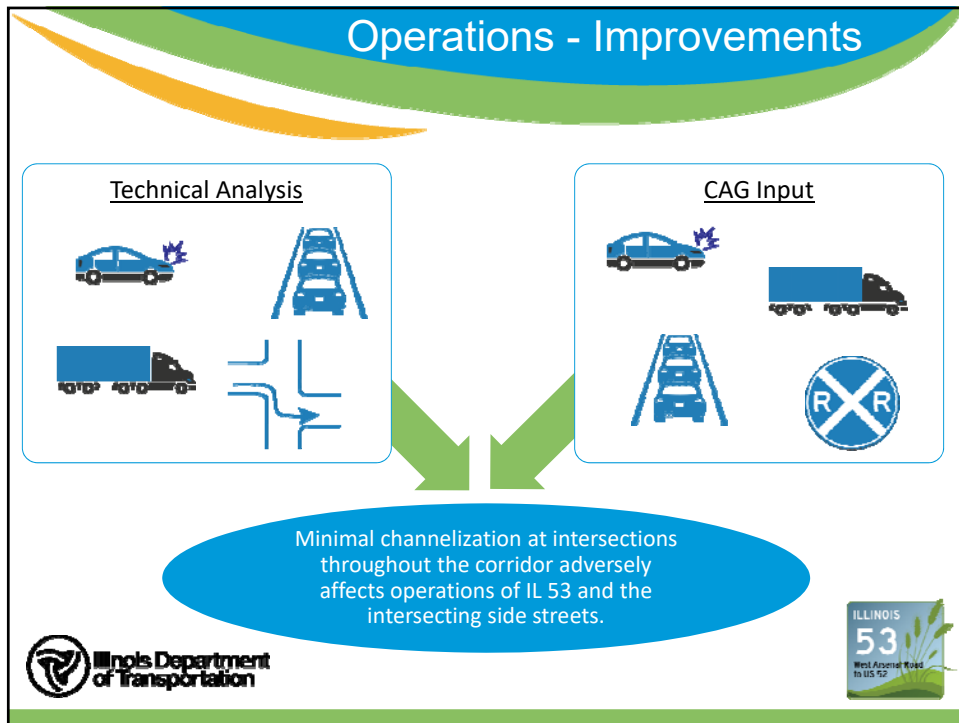
Workshop Results

Technical Analysis

- High truck percentage
- Offset alignments at crossroads
- Multiple access points to IL 53
- Significant number of median crossovers and openings
- Discontinuity of pedestrian facilities along the corridor
- High number of rear end, turning, and angle crashes
- Limited bicycle facilities
- Increase in recent development
- Traffic Signal Warrants







Potential Improvements
Workshop



Workshop Review &
Discussion

Next Steps

