





**IL 53 Study**  
**W. Arsenal Road to US 52**  
**Will County, Illinois**



Illinois Department  
of Transportation



Public Meeting  
Stone City VFW  
November 10, 2015



What will you learn today?

Purpose of today's meeting:

- Describe the project development process
- Obtain public input on the transportation issues in the study area
- Provide information on additional public involvement opportunities



## Where is the project located?

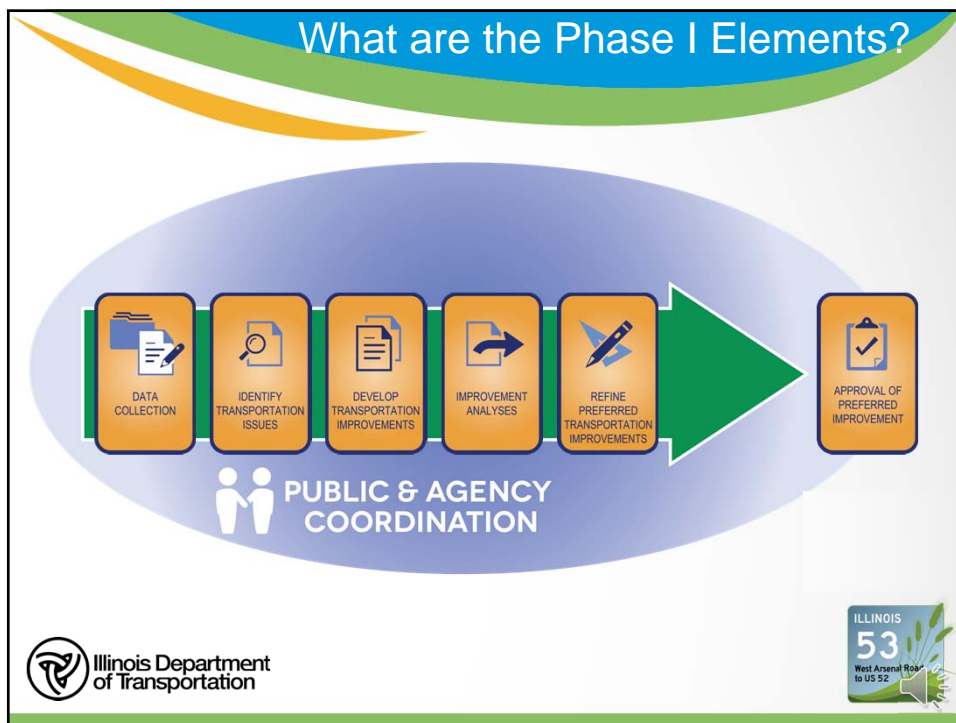
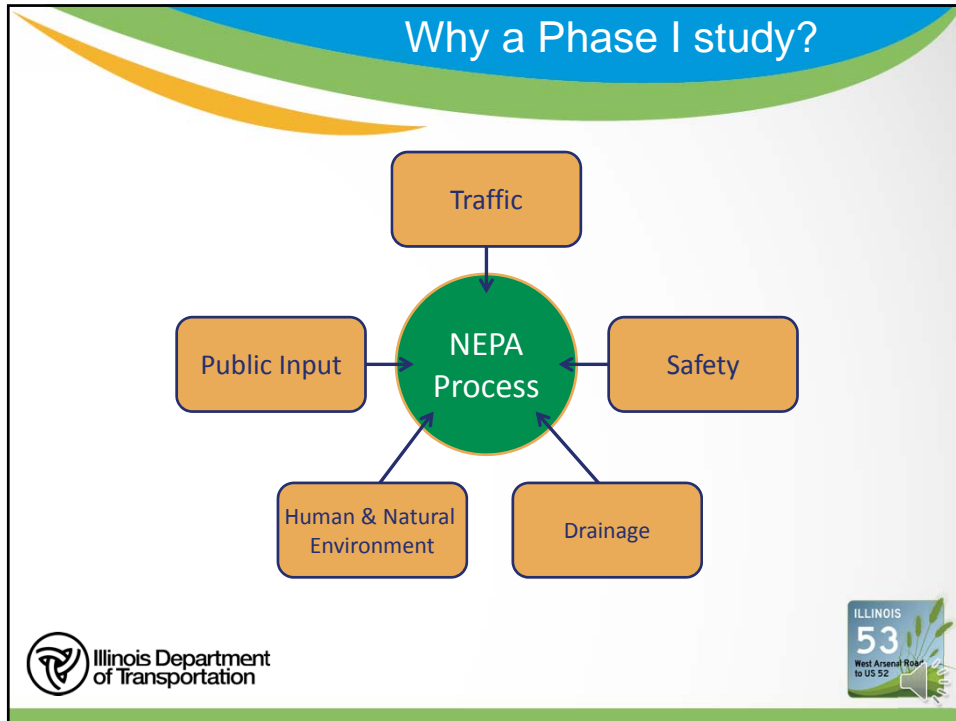
Legend

Illinois Department of Transportation

## How are IDOT projects organized?


PHASE I [ TYPICALLY 18-24 MONTHS ]	PHASE II [ TYPICALLY 18-24 MONTHS ]	PHASE III
 PRELIMINARY ENGINEERING & ENVIRONMENTAL STUDIES	 CONTRACT PLAN PREPARATION	 CONSTRUCTION
 LAND ACQUISITION		
Current Phase		

Illinois Department of Transportation





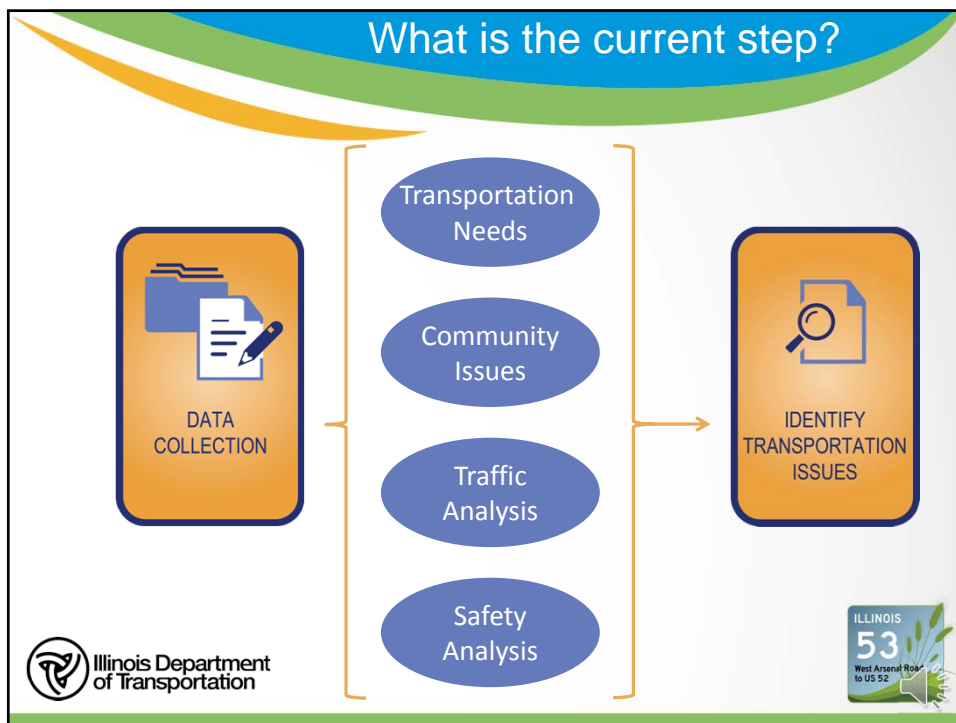
## What is the current step?

- Collect data to identify transportation issues and concerns:
  - Existing roadway and land use plans
  - Traffic, crash, bicycle, and pedestrian data
  - Population and employment forecasts
  - Local and regional comprehensive plans
  - Flooding records
- Solicit input from public






DATA  
COLLECTION








## What are some existing conditions?

- **IL 53 Traffic**
  - South of West Arsenal Road
    - 6,700 vehicles per day
  - North of US 52 (Doris Ave.)
    - 25,600 vehicles per day
  - Truck Percentage: 27% - 34%
- **Cross Street Traffic**
  - 50 vehicles per day at southern project limits
  - 11,100 vehicles per day at northern project limits

## What are some existing conditions?

- **2009 to 2013**
  - 423 crashes
  - 140 injury crashes
  - 5 fatal crashes
  - Rear-end and turning crashes are most prevalent
- **Five Percent Location**
  - South of US 52 and north of Old Elm Road

## What are some existing conditions?

- Land Use
  - Residential
  - Commercial Use
  - Open Space
















## What are some of the traffic generators?

- Traffic Generators
  - Abraham Lincoln National Cemetery
  - Midewin National Tallgrass Prairie
  - Chicagoland Speedway
  - CenterPoint Intermodal Center
  - US Route 66



## What is Context Sensitive Solutions (CSS)?

- A collaborative, interdisciplinary approach
- Involves stakeholders in the project development process
- Reflects project surroundings – “context”
- Context Sensitive Solutions (CSS) addresses all project aspects:
  - Safety and mobility
  - Community and environment
  - The pavement and beyond the pavement







## Who are stakeholders?

Anyone who could be affected by, concerned with, or interested in the outcome of the proposed improvements being contemplated.

- Property Owners
- Residents
- Businesses
- Non-Profit Organizations
- Elected Officials
- Regulatory Agencies
- Policy Advocates
- Travelers & General Public

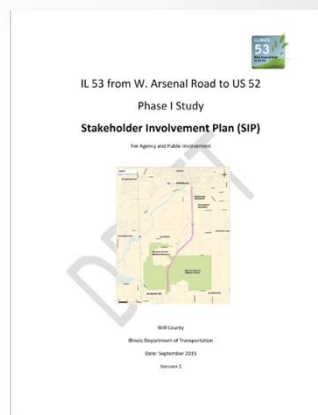





## How are stakeholders involved?

### Stakeholder Involvement Plan (SIP)

- Framework for stakeholder involvement
- Identifies roles and responsibilities of participants
- Establishes timing of stakeholder activities
- SIP is available for review tonight and on project website, [www.IL53Corridor.org](http://www.IL53Corridor.org)

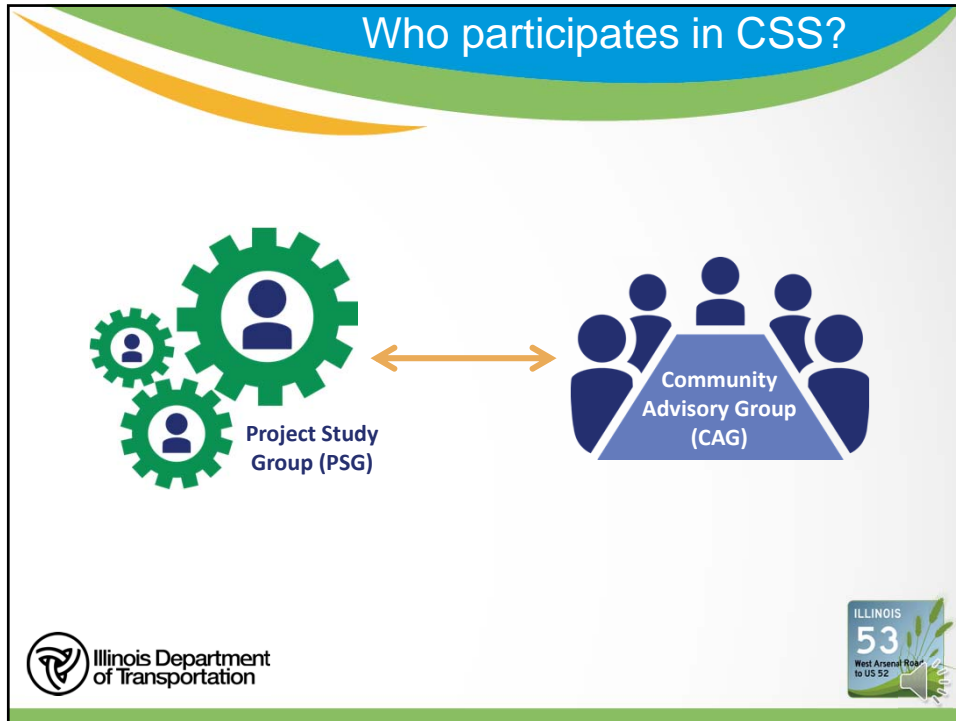


## What are CSS goals?


- Understand stakeholder's key concerns
- Involve stakeholders in the decision making process
- Apply flexibility in design to address stakeholder concerns
- Achieve a **general understanding of agreement** among the stakeholders









### Who participates in CSS?



Project Study Group (PSG)

<u>Group Members</u>	<u>Project Role</u>
<ul style="list-style-type: none"><li>• Illinois Department of Transportation</li><li>• Federal Highway Administration</li></ul>	<ul style="list-style-type: none"><li>• Collects and analyzes data</li><li>• Promotes partnership</li><li>• Ensures all requirements are met</li><li>• Renders the final decisions</li></ul>



## Who participates in CSS?




Community Advisory Group (CAG)

<p><u>Group Members</u></p> <ul style="list-style-type: none"> <li>• Property Owners</li> <li>• Residents</li> <li>• Businesses</li> <li>• Non-Profit Organizations</li> <li>• Commuters</li> </ul>	<p><u>Project Role</u></p> <ul style="list-style-type: none"> <li>• Provides insight to issues and concerns</li> <li>• Identifies potential solutions/implementation</li> <li>• Meets in a workshop format</li> </ul>
-----------------------------------------------------------------------------------------------------------------------------------------------------------------------------------------------------	-----------------------------------------------------------------------------------------------------------------------------------------------------------------------------------------------------------------------




## How does information get out?



**COMMUNICATION**

Media Outreach and Newsletters



Agency Meetings

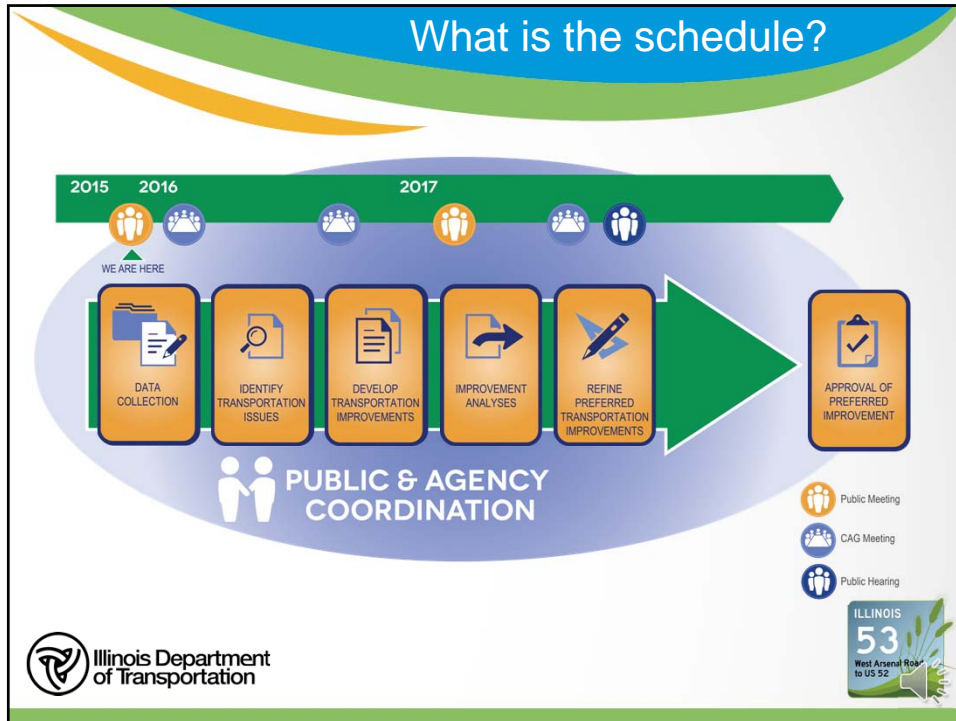
Public Meetings and Hearings

Small Group Presentations

Community Advisory Group

Website  
[www.IL53Corridor.org](http://www.IL53Corridor.org)



## How can you stay involved?

Please join us in the exhibit area to:

- View exhibits
- Talk with Project Study Team members
- Note issues and concerns, Ex:
  - Flooding
  - Traffic congestion
  - Access issues



ILLINOIS  
**53**  
West Arsenal Road  
to US 52

Illinois Department of Transportation

## How can I stay involved?

- Community Advisory Group applications available
- December 1, 2015 due date
- Selection based on representation

**COMMUNITY ADVISORY GROUP APPLICATION**

November 20, 2015

There will be opportunities for interested candidates to be actively involved in the study through participation in a Community Advisory Group.

**WHAT IS A COMMUNITY ADVISORY GROUP?**  
The Illinois Department of Transportation (IDOT) is seeking a diverse group of community representatives and service as the lead partner for the development of a community advisory group to assist in the study. The group will consist of representatives of diverse community interests, including government officials, community representatives, planning experts and residents, and individuals with regional knowledge. The IDOT seeks the Department in making other decisions on transportation issues projects that benefit the community and environment.

**HOW CAN YOU CONTRIBUTE TO THE COMMUNITY ADVISORY GROUP?**  
It is anticipated that this project will have three (3) meetings, by phone and make the information necessary to identify the study. Meetings will provide an opportunity to meet with IDOT members who will be responsible for identifying or suggesting a representative to attend the IDOT meetings, providing general input on the study, understanding of transportation issues the IDOT, and participating with the Department.

Participants will be asked to understand and adhere to the following ground-rules:

- All participants will participate in the process in a respectful and courteous manner.
- All participants must come to the meeting with an open mind and participate openly and honestly.
- All participants in the process must treat each other with respect and dignity.
- The ground rules apply to all participants, based on the highest level of respect.
- All participants understand that topics will not be resolved prior to the next meeting and a general consensus is required.
- The Department will make a final recommendation on a preferred alternative.
- Minutes of the meeting are prepared to record the meetings or otherwise, but participants in the process.

If you are interested in being a participant in an advisory group, please fill out the form below. All forms must be received by November 1, 2015, to be considered for the advisory group. The IDOT reserves the right to select members who they determine will be the best fit for the advisory group. The IDOT will contact you by email to confirm your selection. For more information, please contact the IDOT at [IL53Corridor@ClarkDietz.com](mailto:IL53Corridor@ClarkDietz.com).

Name: \_\_\_\_\_  
Organization/Institution: \_\_\_\_\_  
Address: \_\_\_\_\_  
Phone: \_\_\_\_\_  
Email: \_\_\_\_\_

## How can I stay involved?

- Comments
  - Comment Form
  - Website: [www.IL53Corridor.org](http://www.IL53Corridor.org)
  - Email: [IL53Corridor@ClarkDietz.com](mailto:IL53Corridor@ClarkDietz.com)
- Forms may be dropped in the box today or mailed
- Due December 1, 2015 to become part of the official public meeting record

6.53 Phase I Study  
West Arsenal Road to US 52, 5th District

**PUBLIC MEETING COMMENTS**

November 20, 2015

Thank you for attending the public meeting for the proposed improvement of 6.53 from West Arsenal Road to US 52 in 5th District. This may use this comment form to provide input on the information presented tonight. Your comments and opinions are an important part of this project and you are encouraged to provide them as early as possible after this meeting. When you have completed this form, please place it in the comment box. You may also return it to the regional site of the District or mail it to: IL53Corridor@ClarkDietz.com. Comments received by December 1, 2015 will become part of the official public meeting record.

Name: \_\_\_\_\_ Phone: \_\_\_\_\_  
First name Last name Apt. No. Email \_\_\_\_\_  
Address \_\_\_\_\_  
Number and Street Apt. No. \_\_\_\_\_  
City State ZIP code \_\_\_\_\_

Please provide your comments on the 6.53 Phase I Study (West Arsenal Road to US 52) as presented at tonight's meeting.

\_\_\_\_\_  
\_\_\_\_\_  
\_\_\_\_\_  
\_\_\_\_\_  
\_\_\_\_\_

[www.IL53Corridor.org](http://www.IL53Corridor.org)

## What is next?

- Form the Community Advisory Group
- Analyze existing conditions and identify deficiencies
- Identify issues and concerns
- Begin integrating the technical analysis with the public comments



Illinois Department  
of Transportation



Thank you for taking an active role in  
the IL 53 Study.

Visit us at [www.IL53Corridor.org](http://www.IL53Corridor.org)

This presentation will begin again in

**5 minutes.**



Illinois Department  
of Transportation

ILLINOIS

53

West Arsenal Road  
to US 52



Thank you for taking an active role in  
the IL 53 Study.

Visit us at [www.IL53Corridor.org](http://www.IL53Corridor.org)  
This presentation will begin again in  
**4 minutes.**



Illinois Department  
of Transportation



Thank you for taking an active role in  
the IL 53 Study.

Visit us at [www.IL53Corridor.org](http://www.IL53Corridor.org)  
This presentation will begin again in  
**3 minutes.**



Illinois Department  
of Transportation





Thank you for taking an active role in  
the IL 53 Study.

Visit us at [www.IL53Corridor.org](http://www.IL53Corridor.org)  
This presentation will begin again in  
**2 minutes.**



Illinois Department  
of Transportation



Welcome

The presentation is about to begin.



Please be seated.



Illinois Department  
of Transportation

